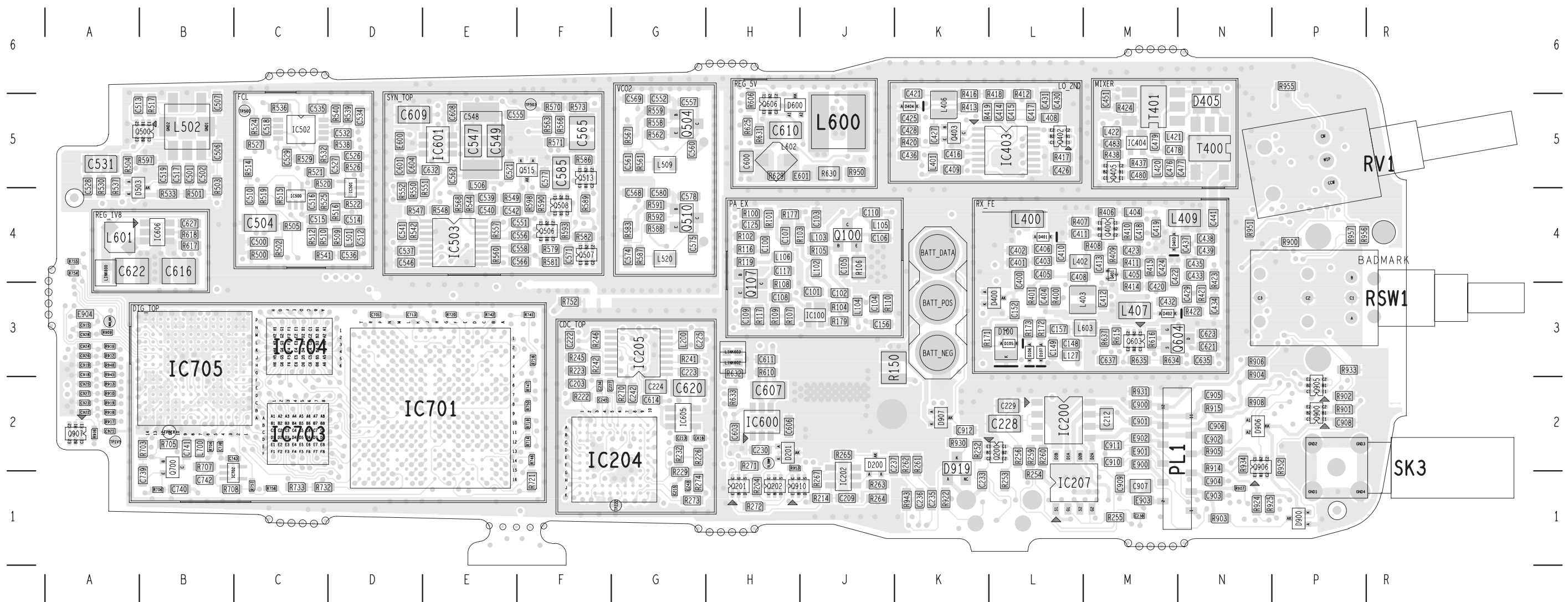
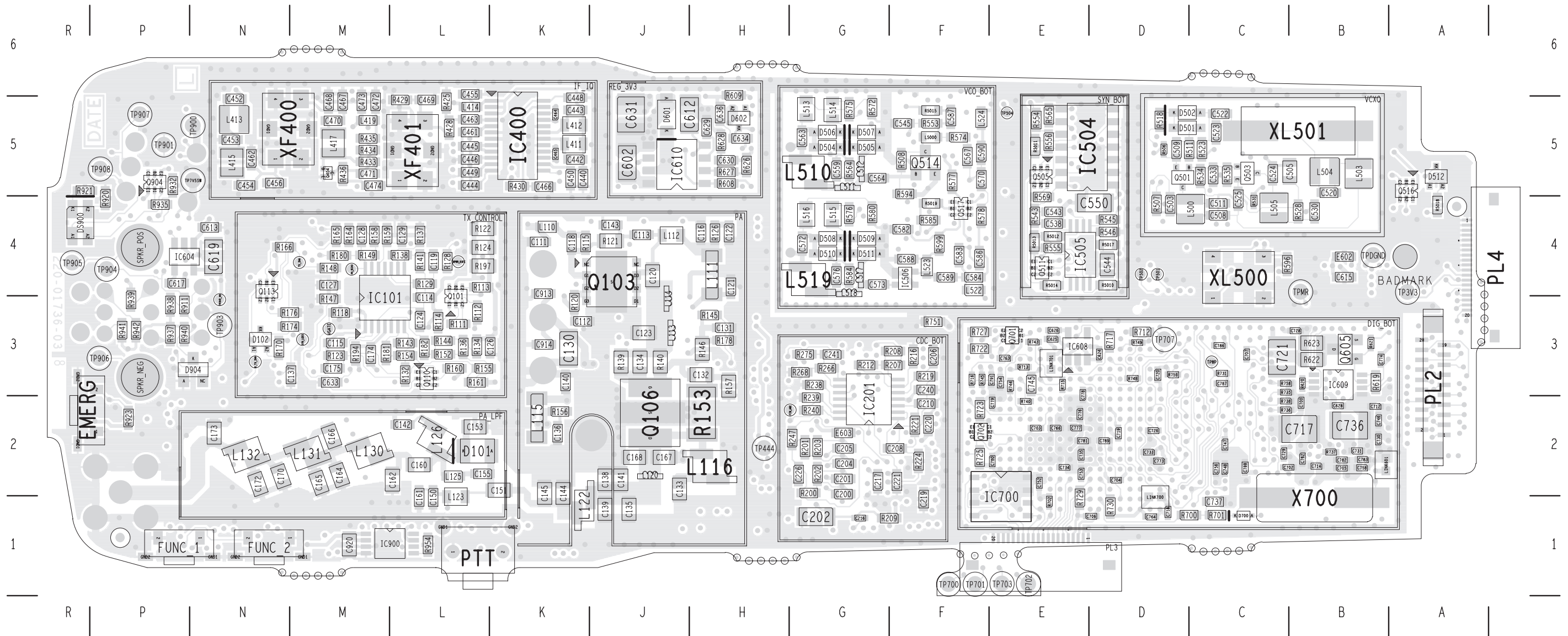


Parts List

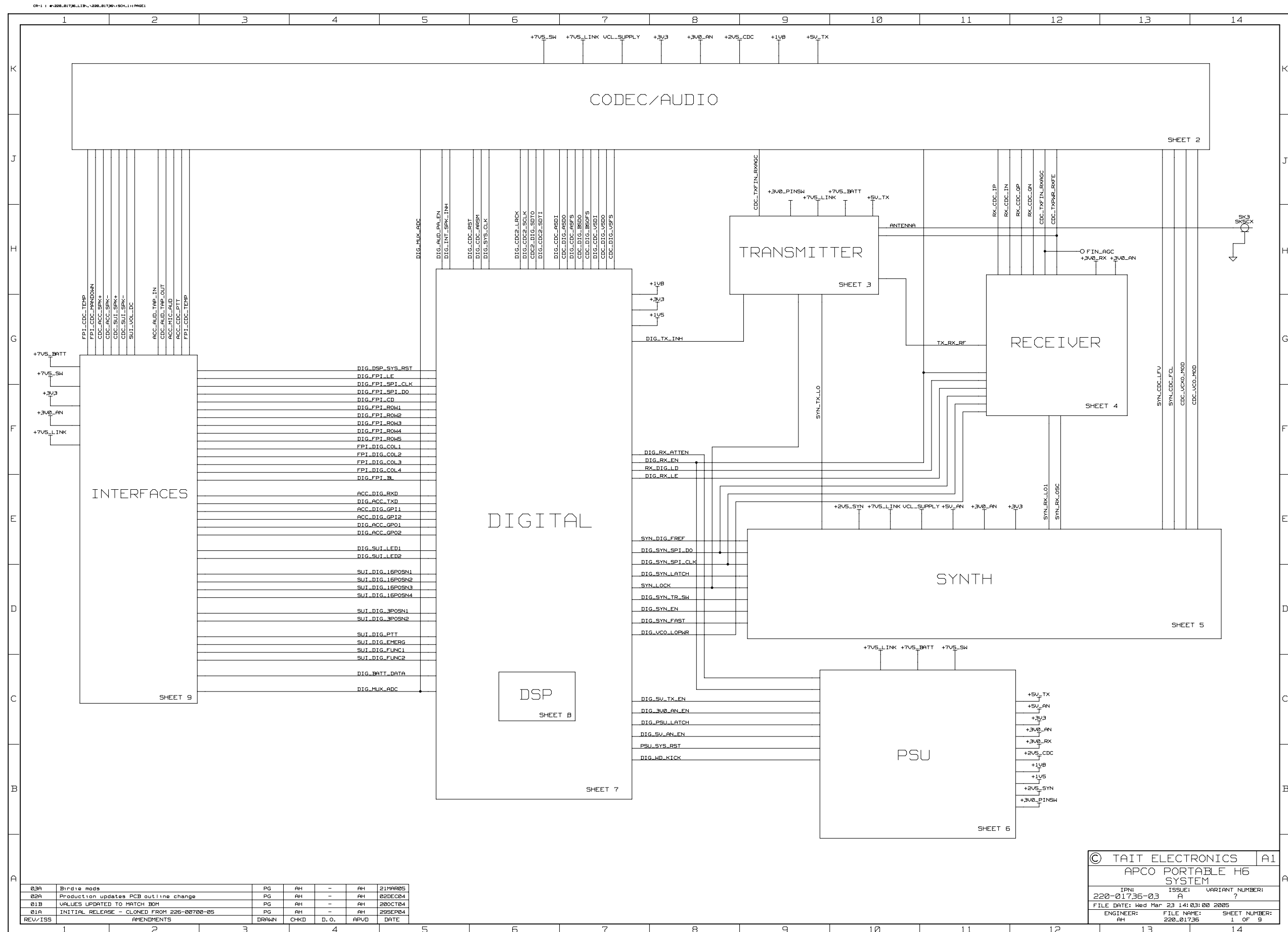
Ref	Var	IPN	Description	Ref	Var	IPN	Description
R715		041-14220-10	Res 0402 2k2 1%	R942		038-15470-10	Res 0603 47k 1/10w 1%
R716		041-14220-10	Res 0402 2k2 1%	R943		038-16100-10	Res 0603 100k 1/10w 1%
R717		038-16100-10	Res 0603 100k 1/10w 1%	R945		041-13820-10	Res 0402 820R 1% 100PPM
R718		041-14220-10	Res 0402 2k2 1%	R946		041-13820-10	Res 0402 820R 1% 100PPM
R719		041-12220-10	Res 0402 22e 1%	R950		038-10000-00	Res 0603 Zero Ohm 1/16w ± 5%
R720		041-14220-10	Res 0402 2k2 1%	R952		038-14100-00	Res 0603 1k0 1/10w 5%
R721		038-14470-00	Res 0603 4k7 1/10w 5%	R953		041-14220-10	Res 0402 2k2 1%
R722		038-15470-10	Res 0603 47k 1/10w 1%	R954		038-15180-00	Res 0603 18k 1/10w 5%
R723		038-15470-10	Res 0603 47k 1/10w 1%	R5010		038-15100-10	Res 0603 10k 1/10w 1%
R725		038-15470-10	Res 0603 47k 1/10w 1%	R5011		038-15220-10	Res 0603 22k 1%
R727		038-15470-10	Res 0603 47k 1/10w 1%	R5012		038-14220-00	Res 0603 2k2 1/10w 5%
R729		038-15100-10	Res 0603 10k 1/10w 1%	R5014		038-15100-10	Res 0603 10k 1/10w 1%
R730		038-15100-10	Res 0603 10k 1/10w 1%	R5015		038-12560-00	Res 0603 56R 1/10w 5%
R731		041-14220-10	Res 0402 2k2 1%	R5017		038-15220-10	Res 0603 22k 1%
R732		038-16150-10	Res 0603 150k 1%	R5018		038-13100-10	Res 0603 100R 1/10w 1%
R733		038-16180-00	Res 0603 180k 1/10w 5%	R5019		038-14100-00	Res 0603 1k0 1/10w 5%
R735		041-14220-10	Res 0402 2k2 1%	REG_1V8		319-00098-00	Shld SMD 12.45x 8.85x3
R736		041-14220-10	Res 0402 2k2 1%	REG_3V3		319-01002-00	Shld SMD 15.5x11.7x3.5
R737		041-14220-10	Res 0402 2k2 1%	REG_5V		319-01002-00	Shld SMD 15.5x11.7x3.5
R738		041-14220-10	Res 0402 2k2 1%	RX_FE		319-00099-00	Shld SMD 27.15x18.6x3.4
R740		041-12220-10	Res 0402 22e 1%	SPKR_POS		356-01070-00	Spring Spkr Cntct Probe
R741		041-12220-10	Res 0402 22e 1%	SPKR_NEG		356-01070-00	Spring Spkr Cntct Probe
R742		041-14220-10	Res 0402 2k2 1%	SYN_BOT		319-01205-00	Shld Top Slide VCO T/Orca
R743		041-14220-10	Res 0402 2k2 1%	SYN_TOP		319-01208-02	Shld Synth/lf T/Orca
R744		041-14220-10	Res 0402 2k2 1%	T400		050-10061-70	Bal Mxr SMD 617db-1018
R745		041-14220-10	Res 0402 2k2 1%	T401		050-10061-70	Bal Mxr SMD 617db-1018
R746		041-14220-10	Res 0402 2k2 1%	TX_CONTRO		319-00099-00	Shld SMD 27.15x18.6x3.4
R747		041-14220-10	Res 0402 2k2 1%	VCO2		319-01205-00	Shld Top Slide VCO T/Orca
R748		041-12220-10	Res 0402 22e 1%	VCO_BOT		319-01206-01	Shld Bttm Slide VCO T/Orca
R749		041-12220-10	Res 0402 22e 1%	VCXO		319-01001-00	Shld SMD 24.4x14.35x4.6
R750		041-12220-10	Res 0402 22e 1%	X700		274-10245-00	XTAL 24M576 HC49/SML 10PPM
R751		038-10000-00	Res 0603 Zero Ohm 1/16w ± 5%	XF400		276-10000-18	Filtr Xtal 45.1m 12k B/W -E12ab
R752		038-10000-00	Res 0603 Zero Ohm 1/16w ± 5%	XF401		276-10000-13	Filtr Xtal 45.1m 15k B/W
R754		041-14220-10	Res 0402 2k2 1%	XL500		539-10011-00	Vctcxo 13.0MHz +-1.5ppm -30+80
R755		041-14220-10	Res 0402 2k2 1%	XL501		274-10022-05	XTAL 13M0133 HC49/SML 30PPM
R756		041-12220-10	Res 0402 22e 1%				
R757		041-12220-10	Res 0402 22e 1%				
R758		041-14220-10	Res 0402 2k2 1%				
R759		041-14220-10	Res 0402 2k2 1%				
R900		038-14390-10	Res 0603 3k9 1/10w 1%				
R901		038-15100-10	Res 0603 10k 1/10w 1%				
R902		038-15180-00	Res 0603 18k 1/10w 5%				
R903		038-15470-10	Res 0603 47k 1/10w 1%				
R904		038-16100-10	Res 0603 100k 1/10w 1%				
R905		038-15470-10	Res 0603 47k 1/10w 1%				
R906		038-14470-00	Res 0603 4k7 1/10w 5%				
R907		041-13820-10	Res 0402 820R 1% 100PPM				
R908		038-15470-10	Res 0603 47k 1/10w 1%				
R909		041-14220-10	Res 0402 2k2 1%				
R910		041-14220-10	Res 0402 2k2 1%				
R911		038-12470-00	Res 0603 47R 1/10w 5%				
R912		041-14220-10	Res 0402 2k2 1%				
R913		041-14220-10	Res 0402 2k2 1%				
R914		038-15470-10	Res 0603 47k 1/10w 1%				
R915		038-15470-10	Res 0603 47k 1/10w 1%				
R916		041-14220-10	Res 0402 2k2 1%				
R917		041-14220-10	Res 0402 2k2 1%				
R918		041-14220-10	Res 0402 2k2 1%				
R919		041-14220-10	Res 0402 2k2 1%				
R920		038-13270-10	Res 0603 270R 1/10w 1%				
R921		038-13100-00	Res 0603 100R 1/10w 5%				
R922		038-15470-10	Res 0603 47k 1/10w 1%				
R923		038-15470-10	Res 0603 47k 1/10w 1%				
R924		038-15470-10	Res 0603 47k 1/10w 1%				
R925		038-15470-10	Res 0603 47k 1/10w 1%				
R930		038-13100-10	Res 0603 100R 1/10w 1%				
R931		038-15470-10	Res 0603 47k 1/10w 1%				
R932		038-15220-10	Res 0603 22k 1%				
R933		038-13120-00	Res 0603 120R 1/10w 5%				
R934		038-13120-00	Res 0603 120R 1/10w 5%				
R935		038-15220-10	Res 0603 22k 1%				
R936		041-14220-10	Res 0402 2k2 1%				
R937		038-15470-10	Res 0603 47k 1/10w 1%				
R938		038-15470-10	Res 0603 47k 1/10w 1%				
R939		038-15470-10	Res 0603 47k 1/10w 1%				
R940		038-15470-10	Res 0603 47k 1/10w 1%				
R941		038-15470-10	Res 0603 47k 1/10w 1%				



TAIT ELECTRONICS	IPN: 220-01736-03	ISS: A	DATE: 24Mar05	SCALE: NTS
APCO PORTABLE H6 LAYOUT-PRIMARY-SIDE				

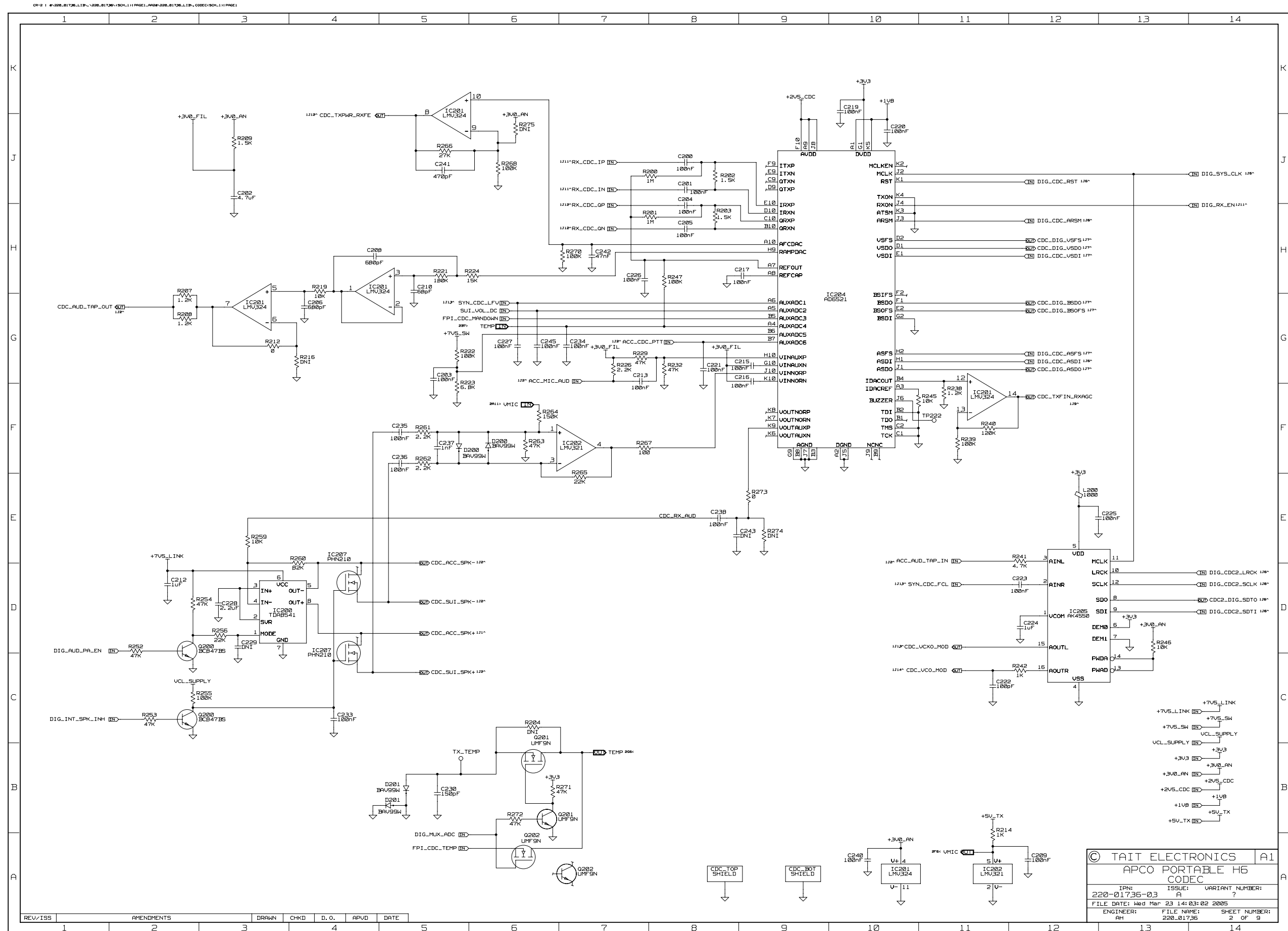


TAIT ELECTRONICS	IPN: 220-01736-03	ISS: A	DATE: 24Mar05	SCALE: NTS
APCO PORTABLE H6 LAYOUT-SECONDARY-SIDE				

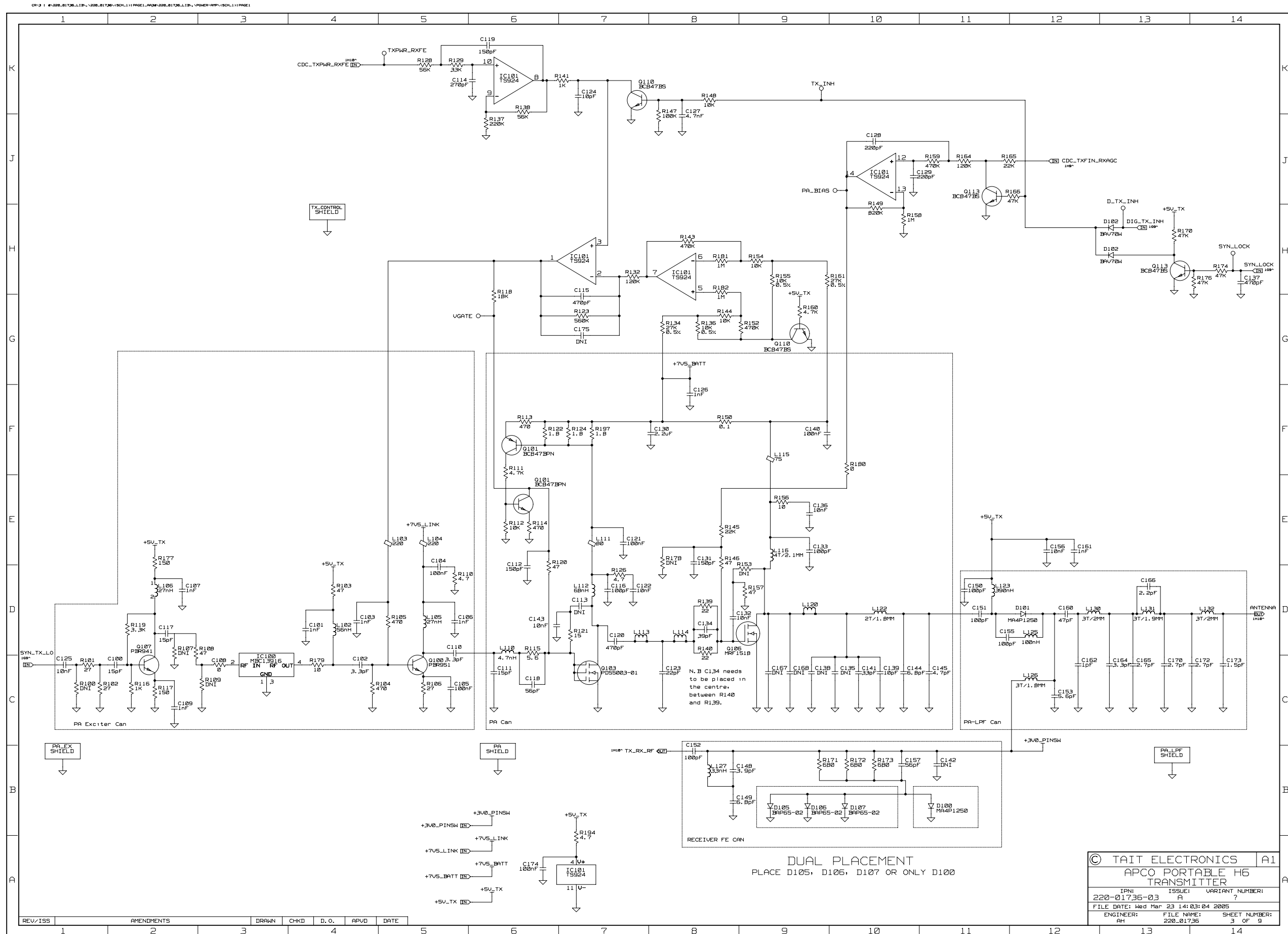


REV/ISS	DESCRIPTION	PG	AH	D.O.	APVD	DATE
03A	Birdie mods	PG	AH	-	AH	21MAR05
02A	Production updates PCB outline change	PG	AH	-	AH	02DEC04
01B	VALUES UPDATED TO MATCH BOM	PG	AH	-	AH	20OCT04
01A	INITIAL RELEASE - CLONED FROM 226-00700-05	PG	AH	-	AH	29SEP04

© TAIT ELECTRONICS		A1
APCO PORTABLE H6 SYSTEM		
IPN: 220-01736-03	ISSUE: A	VARIANT NUMBER: ?
FILE DATE: Wed Mar 23 14:03:00 2005		
ENGINEER: AH	FILE NAME: 220_01736	SHEET NUMBER: 1 of 9

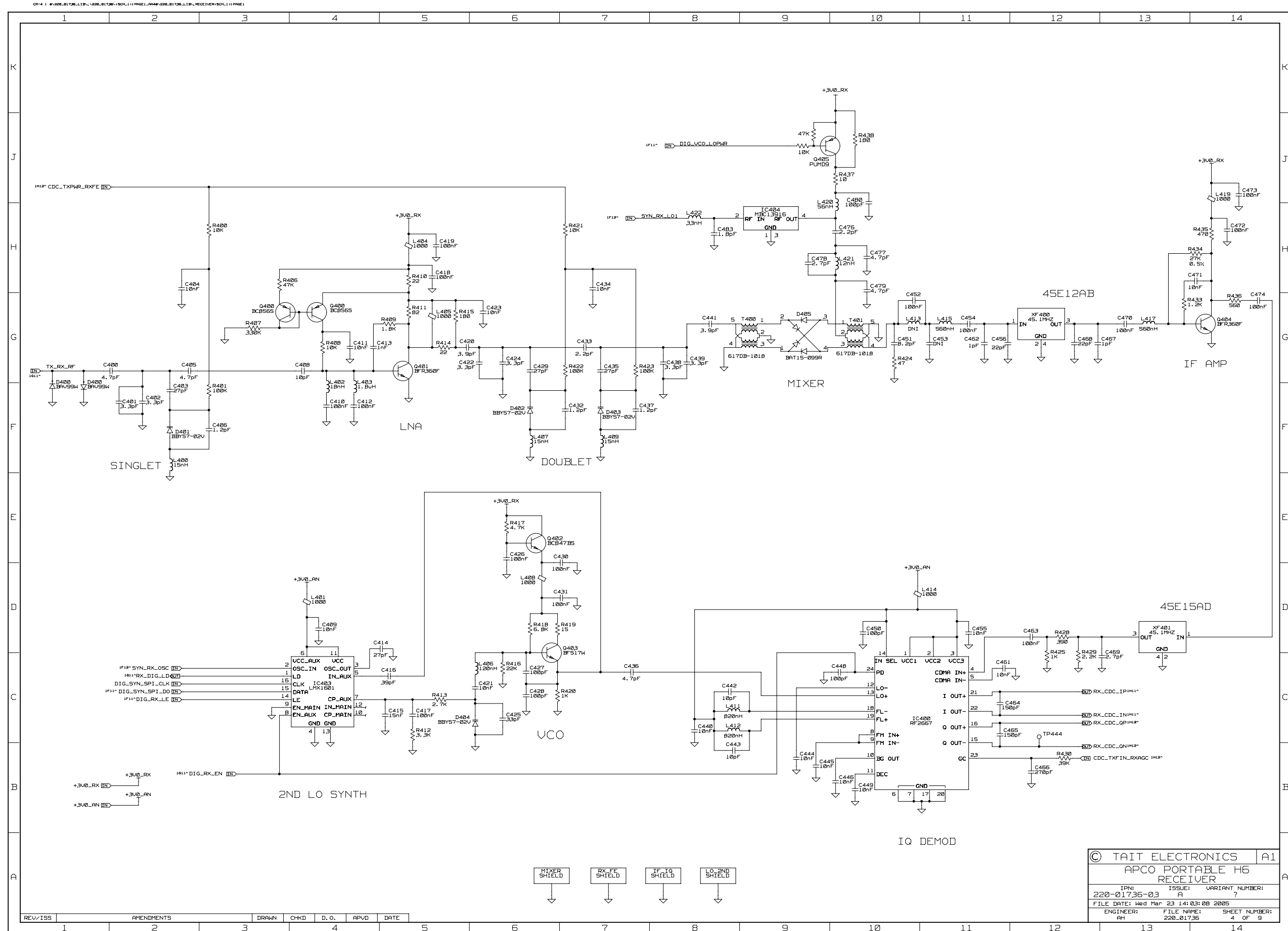


© TAIT ELECTRONICS		A1
APCO PORTABLE H6 CODEC		
IPN: 220-01736-03	ISSUE: A	VARIANT NUMBER: ?
FILE DATE: Wed Mar 23 14:03:02 2005	FILE NAME: 220_01736	SHEET NUMBER: 2 OF 9
ENGINEER: AH	FILE NAME: 220_01736	SHEET NUMBER: 2 OF 9

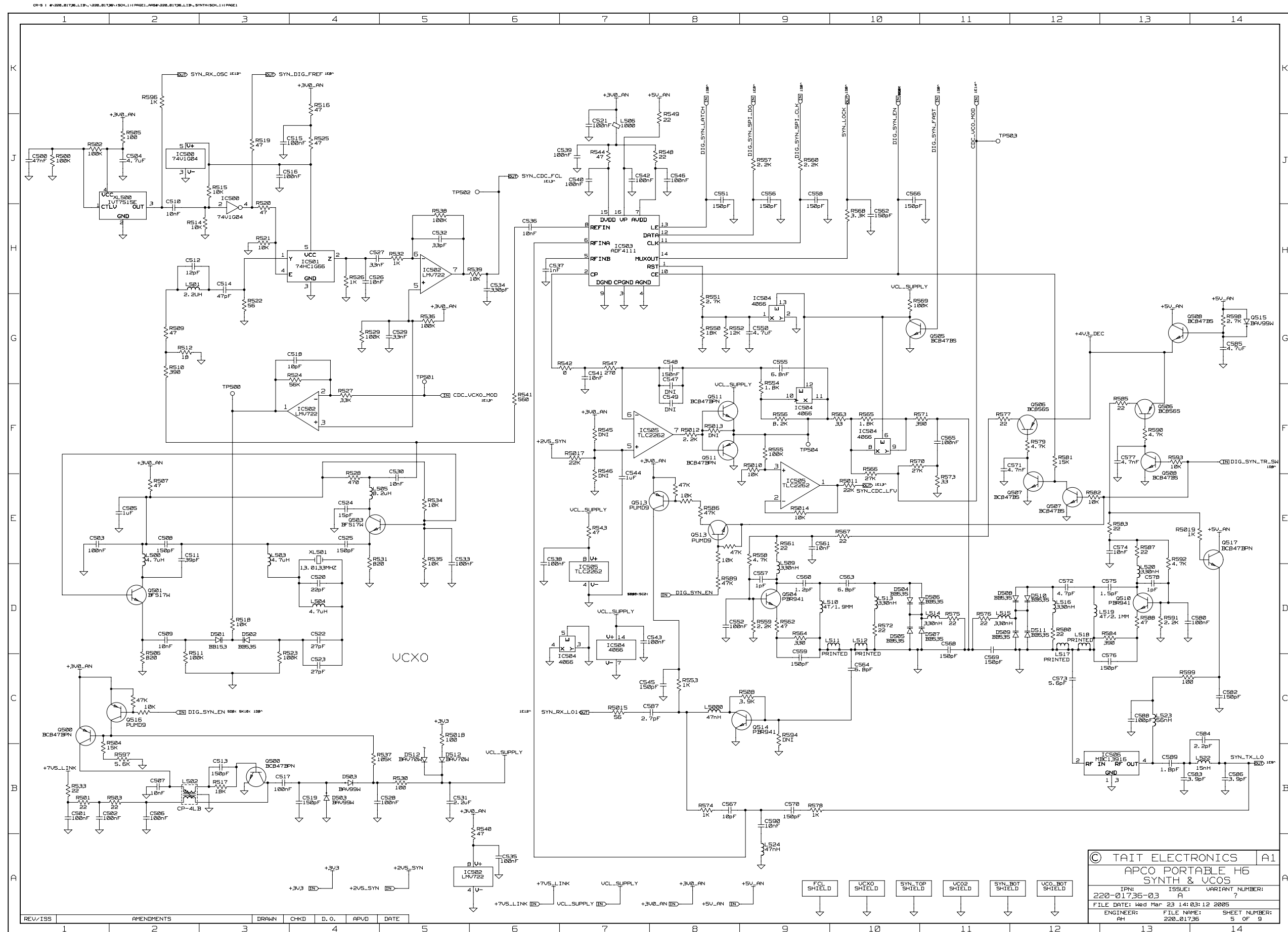


© TAIT ELECTRONICS		A1
APCO PORTABLE H6 TRANSMITTER		
IPN: 220-01736-03	ISSUE: A	VARIANT NUMBER: ?
FILE DATE: Wed Mar 23 14:03:04 2005		
ENGINEER: AH	FILE NAME: 220_01736	SHEET NUMBER: 3 OF 9

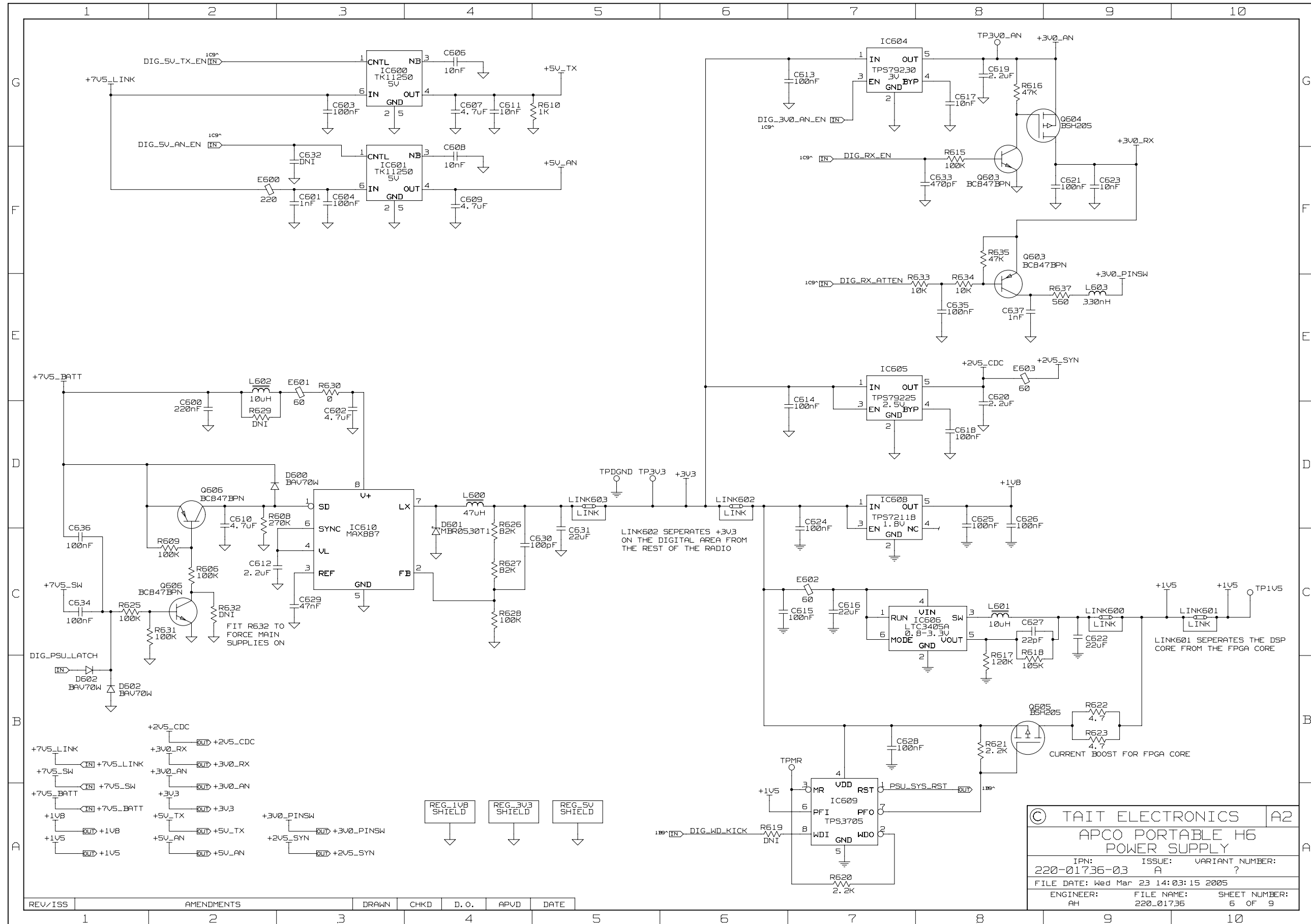
REV/ISS	AMENDMENTS	DRAWN	CHKD	D. O.	APVD	DATE
1						

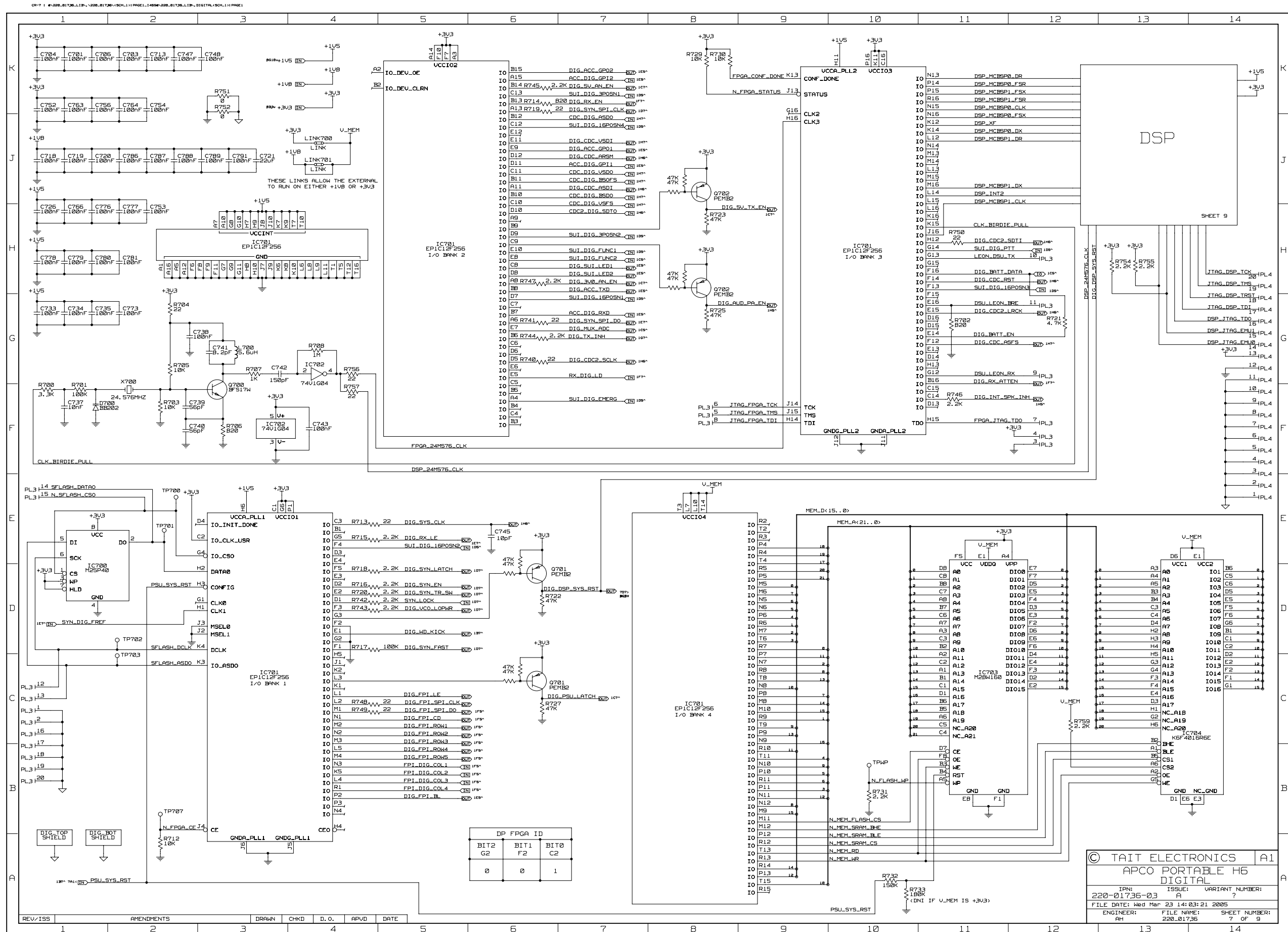


© TAIT ELECTRONICS		A1
APCO PORTABLE H6 RECEIVER		
IPN: 220-01736-03	ISSUE: A	VARIANT NUMBER: ?
FILE DATE: Wed Mar 23 14:03:08 2005		
ENGINEER: AH	FILE NAME: 220_01736	SHEET NUMBER: 4 OF 9

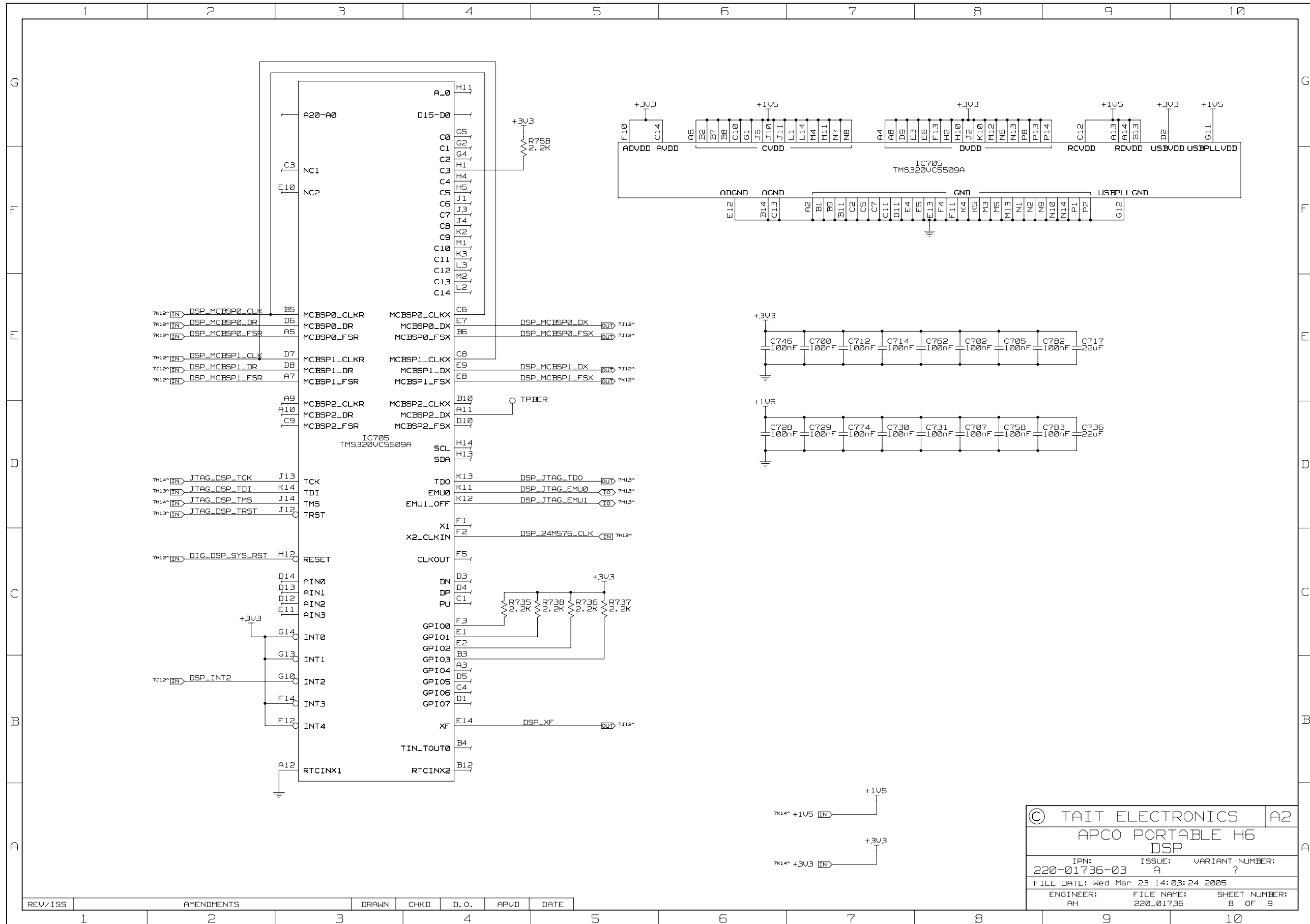


CR-6 : @220_01736_L1B\220_01736\SCH.1\PAGE1.A6@220_01736_L1B_PSU(SCH.1):PAGE1





CR-B : @220_01736_L1B\220_01736\SCH1\1469\220_01736_L1B.DIGITAL\SCH1\1157\220_01736_L1B.DSP\SCH1\1469\220_01736_L1B.DSP



© TAIT ELECTRONICS		A2
APCO PORTABLE H6 DSP		
IPN: 220-01736-03	ISSUE: A	VARIANT NUMBER: ?
FILE DATE: Wed Mar 23 14:03:24 2005		
ENGINEER: AH	FILE NAME: 220_01736	SHEET NUMBER: 8 OF 9

REV/ISS	AMENDMENTS	DRAWN	CHKD	D. O.	APVD	DATE
1						

